

Module Installation Guide



Copyright © 2017 Excalibur Systems. All Rights Reserved.

The following procedure describes how to install or replace modules on an Excalibur carrier boards.

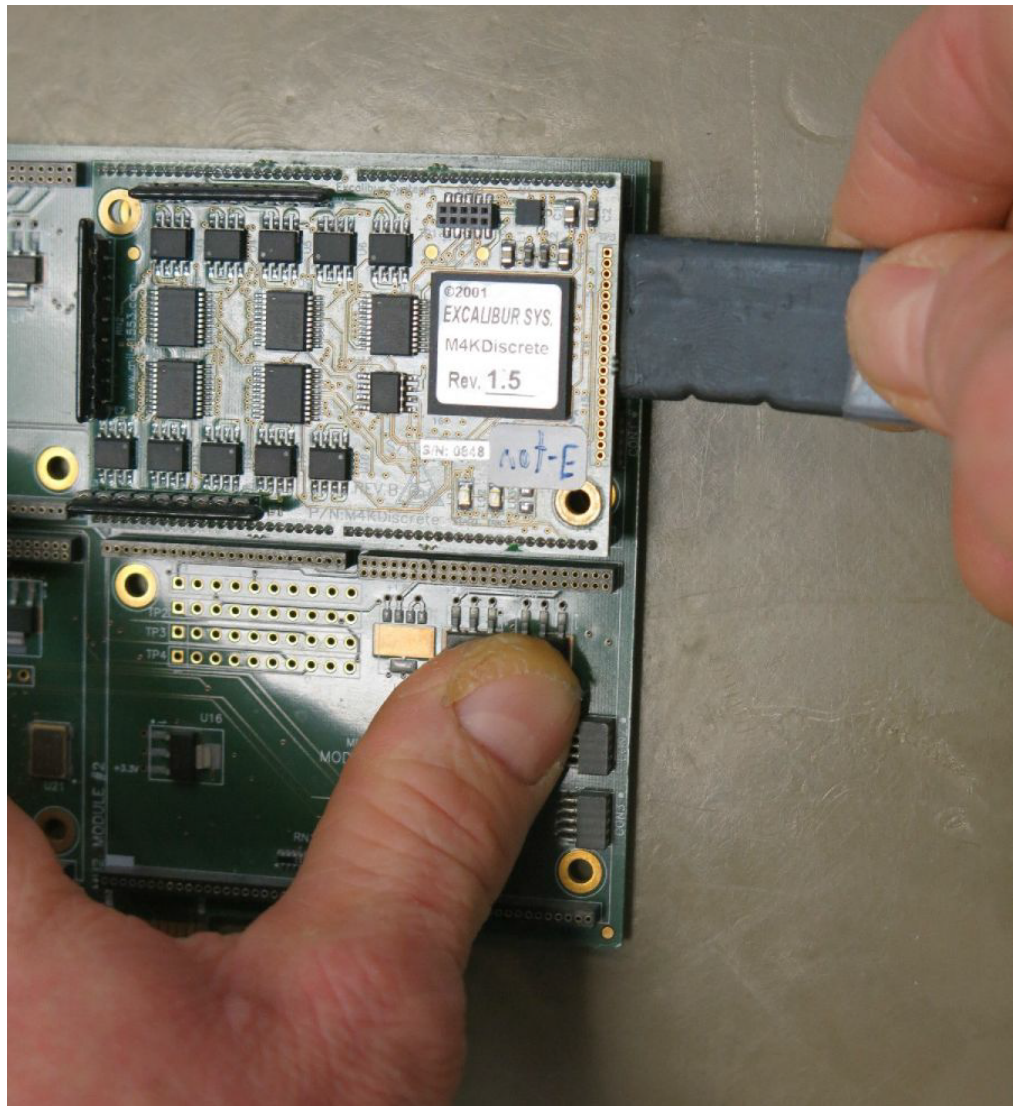
Warning Make sure that you are grounded for electrostatic discharge when handling the Excalibur device, and use all antistatic precautionary measures.

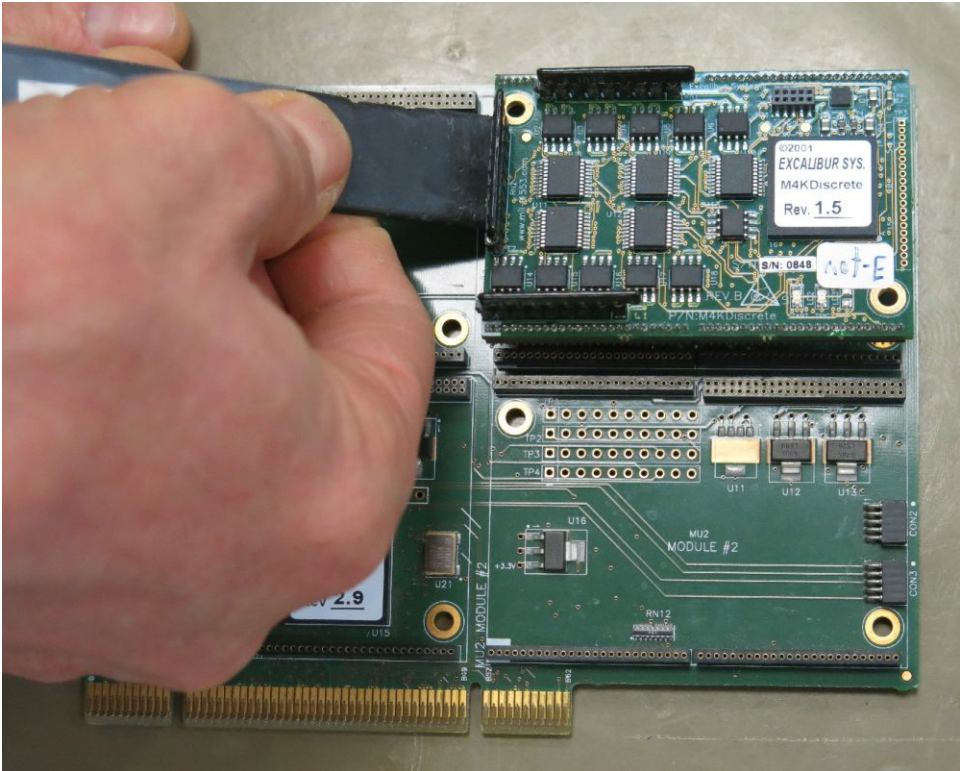
Installing a Module

Installing/replacing a module on an Excalibur carrier board:

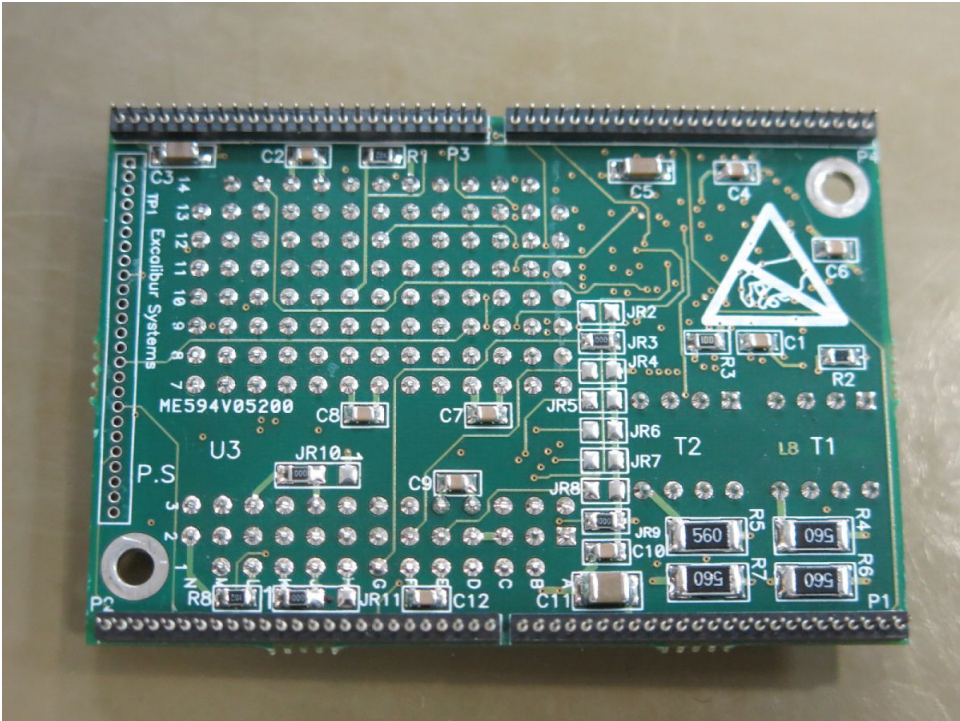
1. With an ESD protected tool, gently pry off the module from the left and right sides. Be careful not to damage the components on the underside of the module or the carrier board.

If you are only inserting a module, and do not need to remove a module, skip to Step 2.

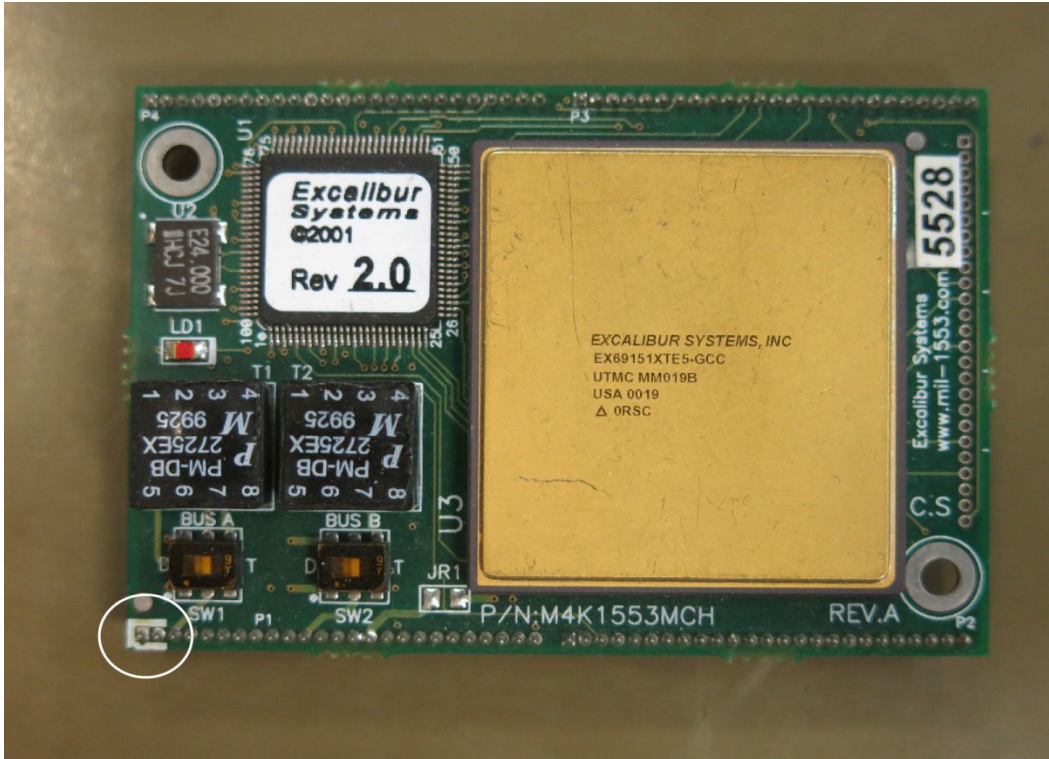




2. Make sure that all the pins on the module are straight, and not bent.

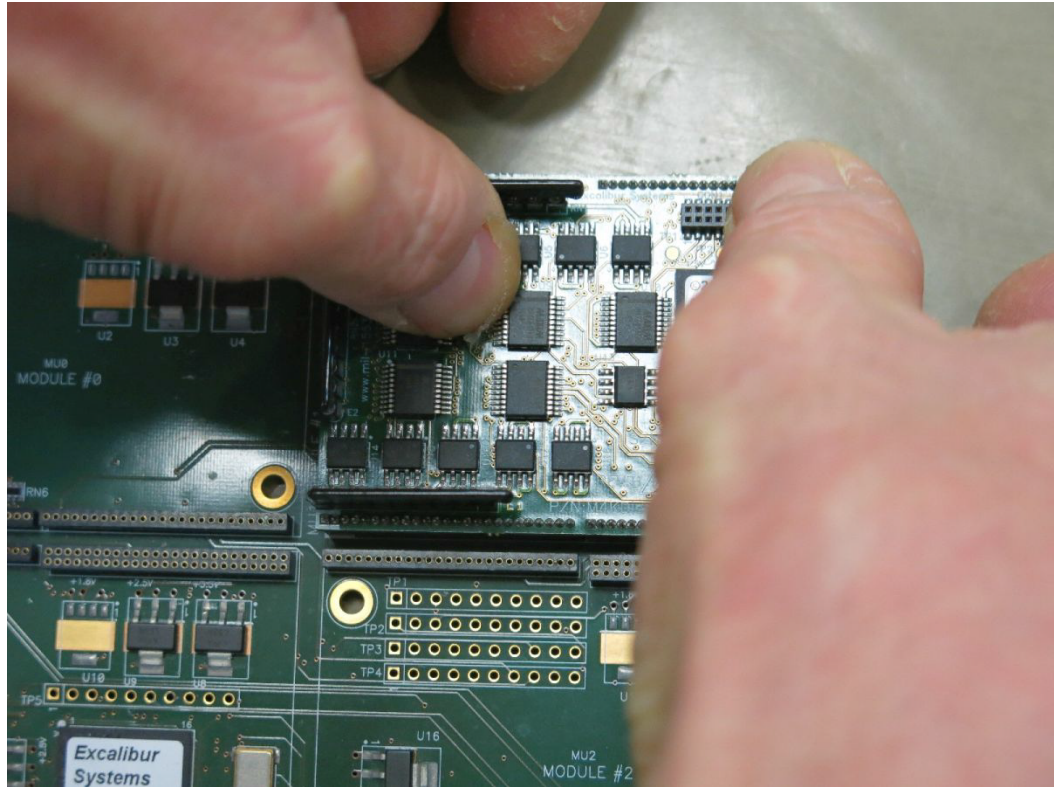


- 3. Align the Pin 1 marker (marked with a white rectangle) on the module with the white rectangles on the carrier board.

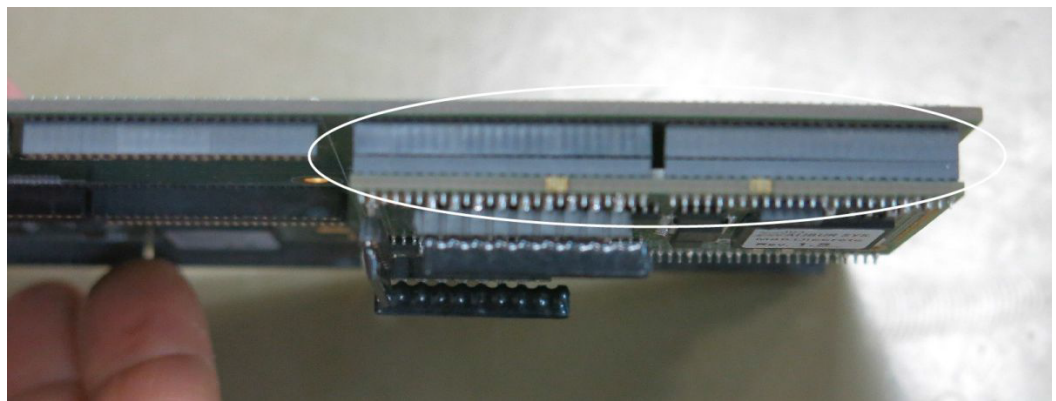


4. Very carefully insert the module into the carrier board.

Warning Make sure that the pins on the module are aligned with the female socket on the carrier board, and not shifted.



5. Make sure that the module is inserted all the way.



Testing the Module

In order to use the carrier board with the new module, you must use an adapter cable with the correct pinouts for the new module. See the **Connectors** section of the user's manual of the new module.

To test the new module, install the module's software tools and run a demo program. See the *Software Tools Programmer's Reference* for your module.

The information contained in this document is believed to be accurate. However, no responsibility is assumed by Excalibur Systems, Inc. for its use and no license or rights are granted by implication or otherwise in connection therewith. Specifications are subject to change without notice.

July 2017, Rev A-2